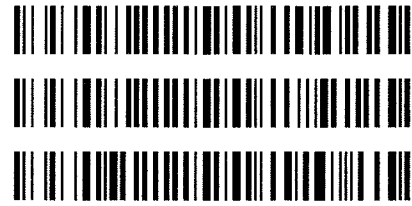




Worklist: 1720

<u>LAB CASE</u>	<u>ITEM</u>	<u>TASK ID</u>	<u>DESCRIPTION</u>
C2017-0806	1	84247	AM 3 Urine Carboxy-THC
C2017-0852	1	84248	AM 3 Urine Carboxy-THC
M2017-1941	3	84249	AM 3 Urine Carboxy-THC



Area Percent Report

Data Path : D:\DATA\2017\5-10-2017\
 Data File : 02101025.D
 Acq On : 10 May 2017 21:51
 Operator : Instrument 65198
 Sample : negative control
 Misc : lot 42617; am 3
 ALS Vial : 21 Sample Multiplier: 1

Integration Parameters: autoint1.e
 Integrator: ChemStation

Method : D:\DATA\2017\2017 Reference Materials\Stimulant Drug Mix A.D\TOXI-A 10115.M
 Title :

Signal : EIC Ion 371.00 (370.70 to 371.70): 02101025.D\data.ms

peak #	R.T. min	first scan	max scan	last scan	PK TY	peak height	corr. area	corr. % max.	% of total
1	3.909	17	24	53	VV	1945537	24624707	100.00%	99.577%
2	4.634	148	159	165	BV	6790	104582	0.42%	0.423%

Sum of corrected areas: 24729289

Signal : EIC Ion 473.00 (472.70 to 473.70): 02101025.D\data.ms

peak #	R.T. min	first scan	max scan	last scan	PK TY	peak height	corr. area	corr. % max.	% of total
1	4.246	66	86	96	VB 2	3546	52063	8.95%	8.218%
2	5.173	231	259	280	BB	29658	581489	100.00%	91.782%

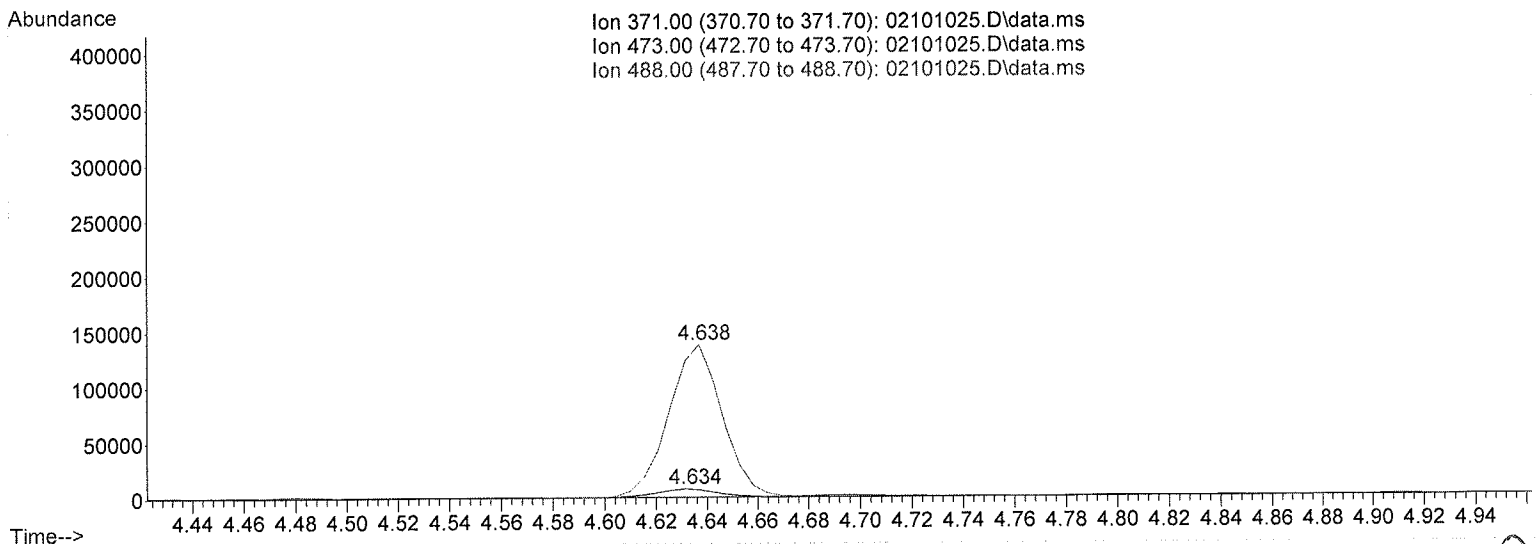
Sum of corrected areas: 633552

Signal : EIC Ion 488.00 (487.70 to 488.70): 02101025.D\data.ms

peak #	R.T. min	first scan	max scan	last scan	PK TY	peak height	corr. area	corr. % max.	% of total
1	4.638	148	159	179	BV	135186	2039504	100.00%	100.000%

Sum of corrected areas: 2039504

TOXI-A 10115.M Thu May 11 07:20:27 2017



[Handwritten signature]

Area Percent Report

Data Path : D:\DATA\2017\5-10-2017\
 Data File : 02201026.D
 Acq On : 10 May 2017 22:00
 Operator : Instrument 65198
 Sample : positive control
 Misc : FE03121501 in neg lot 42617; am 3
 ALS Vial : 22 Sample Multiplier: 1

Integration Parameters: autoint1.e
 Integrator: ChemStation

Method : D:\DATA\2017\2017 Reference Materials\Stimulant Drug Mix A.D\TOXI-A 10115.M
 Title :

Signal : EIC Ion 371.00 (370.70 to 371.70): 02201026.D\data.ms

peak #	R.T. min	first scan	max scan	last scan	PK TY	peak height	corr. area	corr. % max.	% of total
1	3.882	4	19	48	BV	2036919	27375894	100.00%	89.282%
2	4.600	141	152	157	BV	8345	137902	0.50%	0.450%
3	4.662	157	164	188	VV	189729	3148323	11.50%	10.268%

Sum of corrected areas: 30662120

Signal : EIC Ion 473.00 (472.70 to 473.70): 02201026.D\data.ms

peak #	R.T. min	first scan	max scan	last scan	PK TY	peak height	corr. area	corr. % max.	% of total
1	4.214	74	80	93	BB	3991	59263	4.10%	2.450%
2	4.664	156	164	184	PB	87515	1446019	100.00%	59.785%
3	5.134	213	251	273	BB	47024	913433	63.17%	37.765%

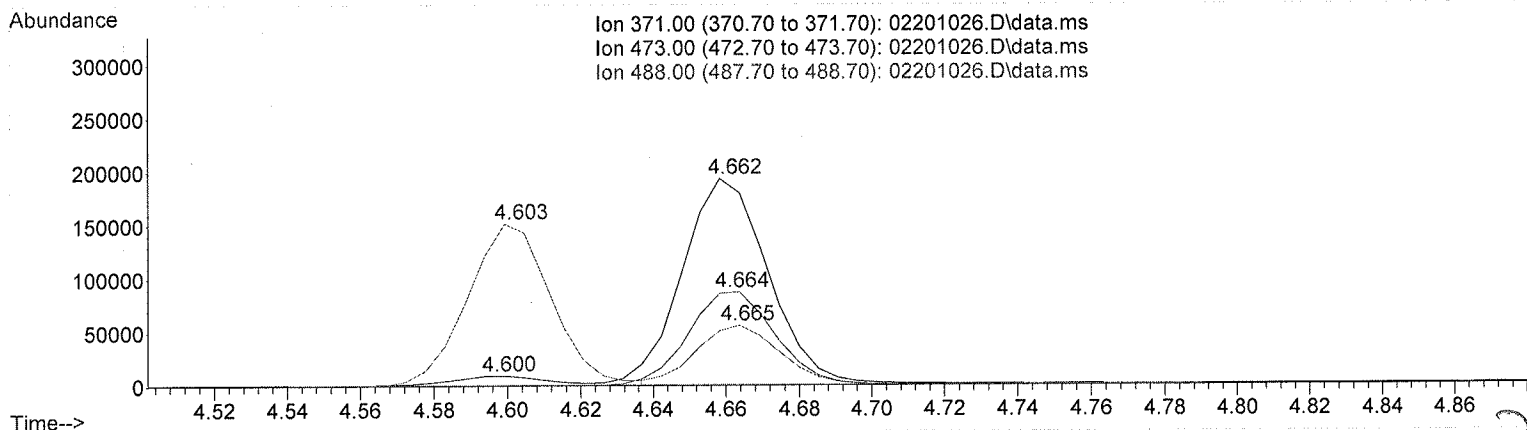
Sum of corrected areas: 2418715

Signal : EIC Ion 488.00 (487.70 to 488.70): 02201026.D\data.ms

peak #	R.T. min	first scan	max scan	last scan	PK TY	peak height	corr. area	corr. % max.	% of total
1	4.603	143	153	159	BV	149546	2386578	100.00%	71.235%
2	4.665	159	164	174	VV	54702	893732	37.45%	26.676%
3	5.135	244	252	264	BB	3757	69994	2.93%	2.089%

Sum of corrected areas: 3350303

TOXI-A 10115.M Thu May 11 07:20:44 2017



[Handwritten signature]

Area Percent Report

Data Path : D:\DATA\2017\5-10-2017\
 Data File : 02201034.D
 Acq On : 10 May 2017 23:15
 Operator : Instrument 65198
 Sample : positive control
 Misc : FE03121501 in neg lot 42617; am 3
 ALS Vial : 22 Sample Multiplier: 1

Integration Parameters: autoint1.e
 Integrator: ChemStation

Method : D:\DATA\2017\2017 Reference Materials\Stimulant Drug Mix A.D\TOXI-A 10115.M
 Title :

Signal : EIC Ion 371.00 (370.70 to 371.70): 02201034.D\data.ms

peak #	R.T. min	first scan	max scan	last scan	PK TY	peak height	corr. area	corr. % max.	% of total
1	3.874	6	17	64	BV	1846780	25953337	100.00%	89.608%
2	4.590	137	150	155	BV	7756	126486	0.49%	0.437%
3	4.652	155	162	186	VB	167366	2883293	11.11%	9.955%

Sum of corrected areas: 28963115

Signal : EIC Ion 473.00 (472.70 to 473.70): 02201034.D\data.ms

peak #	R.T. min	first scan	max scan	last scan	PK TY	peak height	corr. area	corr. % max.	% of total
1	4.206	59	79	89	BB 2	3729	54914	4.16%	2.709%
2	4.653	144	162	182	BB 2	77032	1320339	100.00%	65.136%
3	5.121	209	249	270	BB	32935	651788	49.37%	32.155%

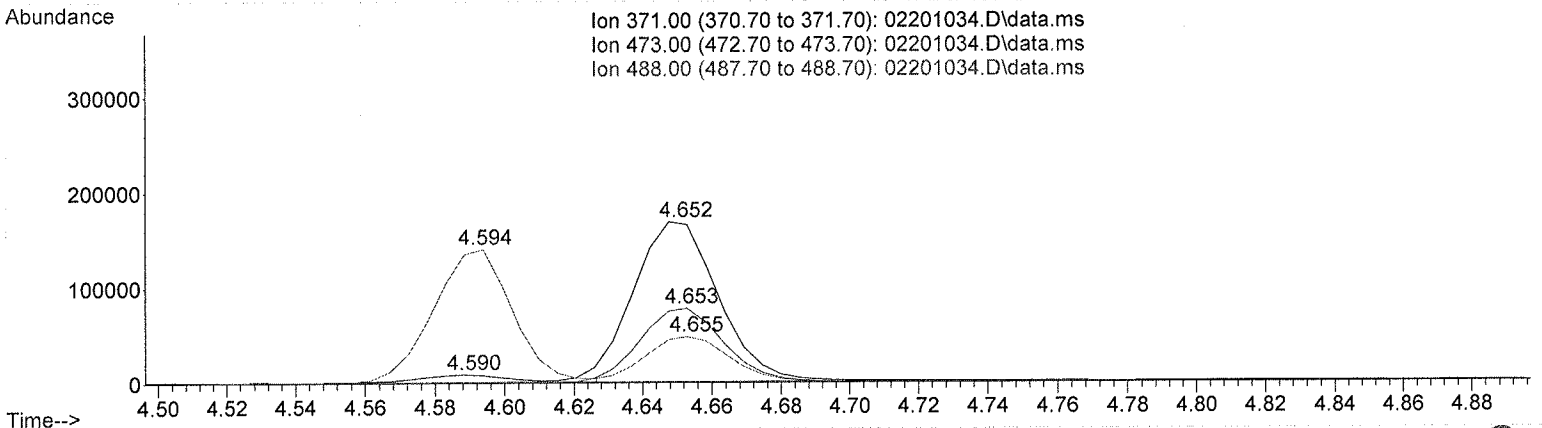
Sum of corrected areas: 2027041

Signal : EIC Ion 488.00 (487.70 to 488.70): 02201034.D\data.ms

peak #	R.T. min	first scan	max scan	last scan	PK TY	peak height	corr. area	corr. % max.	% of total
1	4.594	139	151	157	BV	139265	2214479	100.00%	71.882%
2	4.655	157	162	172	VV	47280	816906	36.89%	26.517%
3	5.123	236	249	262	BB	2668	49331	2.23%	1.601%

Sum of corrected areas: 3080716

TOXI-A 10115.M Thu May 11 07:21:01 2017



BW

Area Percent Report

Data Path : D:\DATA\2017\5-10-2017\
 Data File : 02301027.D
 Acq On : 10 May 2017 22:10
 Operator : Instrument 65198
 Sample : brc3 control
 Misc : lot 68440; am 3
 ALS Vial : 23 Sample Multiplier: 1

Integration Parameters: autoint1.e
 Integrator: ChemStation

Method : D:\DATA\2017\2017 Reference Materials\Stimulant Drug Mix A.D\TOXI-A 10115.M
 Title :

Signal : EIC Ion 371.00 (370.70 to 371.70): 02301027.D\data.ms

peak #	R.T. min	first scan	max scan	last scan	PK TY	peak height	corr. area	corr. % max.	% of total
1	3.818	3	7	10	BV	2570	40944	0.18%	0.169%
2	3.878	10	18	47	VV	1686174	23204800	100.00%	95.959%
3	4.594	123	151	156	BV	6783	117356	0.51%	0.485%
4	4.656	156	163	176	VB	49464	819006	3.53%	3.387%

Sum of corrected areas: 24182106

Signal : EIC Ion 473.00 (472.70 to 473.70): 02301027.D\data.ms

peak #	R.T. min	first scan	max scan	last scan	PK TY	peak height	corr. area	corr. % max.	% of total
1	4.210	74	80	89	BB	3338	49025	12.73%	9.958%
2	4.658	154	163	181	BB	22590	385158	100.00%	78.233%
3	5.127	234	250	264	BB 2	2682	58136	15.09%	11.809%

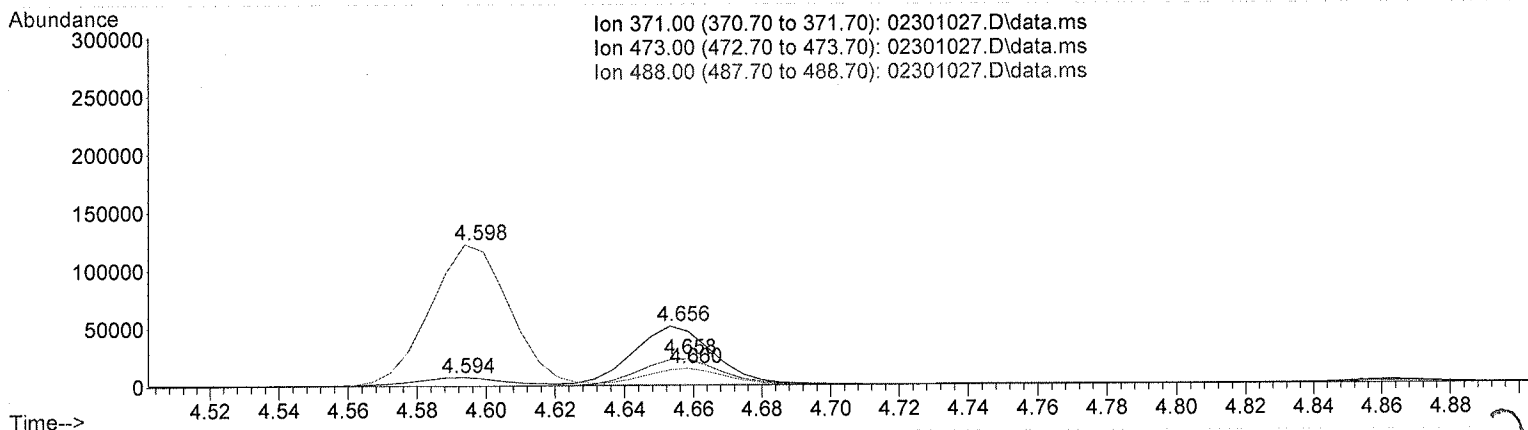
Sum of corrected areas: 492319

Signal : EIC Ion 488.00 (487.70 to 488.70): 02301027.D\data.ms

peak #	R.T. min	first scan	max scan	last scan	PK TY	peak height	corr. area	corr. % max.	% of total
1	4.598	141	152	158	BV	120559	1968457	100.00%	89.097%
2	4.660	158	163	178	VB	14379	240895	12.24%	10.903%

Sum of corrected areas: 2209352

TOXI-A 10115.M Thu May 11 07:21:14 2017



Handwritten signature

2.4.4 Carboxy-THC QC Calculations

Run Date: 5/10/2017

Case Calculations:

Lab Case #: *BRC3- 68440*

EIC Ion 371 Corr. Area:	819006	
EIC Ion 473 Corr. Area:	385158	473:371 Ratio: 0.470
EIC Ion 488 Corr. Area:	240895	488:371 Ratio: 0.294

Quality Control Calculations:

Retention Time acceptable range: 4.562 to 4.752

	<i>1st ctrl</i>	<i>2nd ctrl</i>
EIC Ion 371 Corr. Area:	3148323	2883292
EIC Ion 473 Corr. Area:	1446019	1320339
EIC Ion 488 Corr. Area:	893732	816906

Approximate minimum corrected area of 371 ion: ~ **629665**

Ratio of 473:371			
<i>1st ctrl</i>	<u>0.459</u>	<i>2nd ctrl</i>	<u>0.458</u>
		avg.	0.459

Accepted Range
(+/- 20%) 0.367 - 0.550

Ratio of 488:371			
<i>1st ctrl</i>	<u>0.284</u>	<i>2nd ctrl</i>	<u>0.283</u>
		avg	0.284

Accepted Range
(+/- 20%): 0.227 - 0.340

Carboxy-calculation sheet
Revision 0 effective date 10/23/13
Issuing authority: Quality Manager